

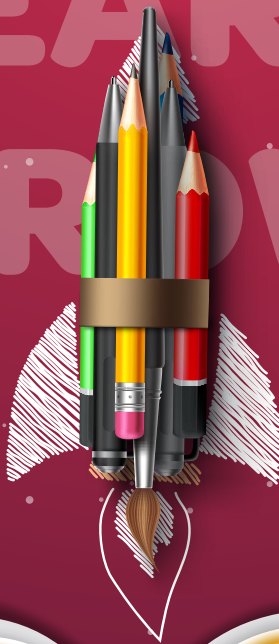


Shantiniketan School

CULTURAL ROOTS. GLOBAL GROWTH.

CALENDAR 2024-25

EXPLORE
LEARN
GROW



APRIL 2024

| MON | TUE | WED | THU | FRI | SAT | SUN |
|--|--|-------------------------------|-----|--|-----|-----|
| 1 New Academic Year begins (PP1 - Grade VIII) | 2 | 3 | 4 | 5 Babu Jagjivan Ram Jayanthi Holiday | 6 | 7 |
| 8 Ugadi School Assembly | 9 Ugadi Holiday | 10 Ramzan/EID Holiday | 11 | 12 | 13 | 14 |
| 15 Shakespeare Week | 16 | 17 Sri Rama Navami Holiday | 18 | 19 Quiz on works of Shakespeare LWD - EY | 20 | 21 |
| 22 | 23 Last Working Day for Grades I - VIII | 24 | 25 | 26 | 27 | 28 |
| 29 | 30 | | | | | |



MONTH INCLUSIONS

SPORTS EVENT

- Investiture Ceremony
- March Past practice begins

JUNE

| MON | TUE | WED | THU | FRI | SAT | SUN |
|---|---|---|-----|------------------------------|--|--------------------|
| | | | | | 1 Staff Reporting | 2 |
| 3 | 4 | 5 | 6 | 7 | 8 | 9 |
| 10 School Reopens for Grade I - VIII | 11 | 12 School Reopens for Early Years World Environment Day | 13 | 14 | 15 KYC Know Your Child Father's Day Celebrations | 16 Father's Day |
| 17 Bakrid Holiday | 18 World Emoji Day Emoji Drawing Competition for Grades IV - VIII | 19 | 20 | 21 International Yoga Day | 22 | 23 |
| 24 The election & selection process begins for the student council | 25 | 26 Wondrous Wednesday | 27 | 28 | 29 Investiture Ceremony | 30 |



MONTH INCLUSIONS

SPORTS EVENT

- Investiture Ceremony

- Yoga

JULY

| MON | TUE | WED | THU | FRI | SAT | SUN |
|--|--------------------------------------|--|--------------------|--|--------------------------|--------------------|
| 1 Vanmahotsav Week & Special Assembly Colouring Competition for Grades I - III | 2 Vanmahotsav Grades VI - VIII | 3 Vanmahotsav Grades IV - V Colouring Competition for Early Years | 4 PT1 FA-1 | 5 PT1 FA-1 | 6 PT1 FA-1 | 7 Ratha Yatra |
| 8 PT1 FA-1 | 9 PT1 FA-1 | 10 Wondrous Wednesday | 11 | 12 Shloka Competition Prelims (Nur - Grade VIII) | 13 | 14 |
| 15 | 16 | 17 Muharram Holiday | 18 | 19 Guru purnima Celebrations Shloka Competition Final | 20 | 21 Guru Purnima |
| 22 Early Years Red Week Literary Fest begins | 23 Dear Day | 24 | 25 Go Green Day | 26 Kargil Diwas Assembly | 27 Literary Fest ends | 28 |
| 29 | 30 | 31 Bonalu Tentative Holiday | | | | |



MONTH INCLUSIONS

- Field Trip
- Spell Bee
- Resource Person

SPORTS EVENT

- Flat Race (Early Years)
- Prop Race (Grade I - III)
- Chess (Grade IV - VIII)
- Caroms (Grade IV - VIII)

AUGUST

| MON | TUE | WED | THU | FRI | SAT | SUN |
|--|----------------------|-------------------------------------|---|--|---|---------------------|
| | | | 1 | 2 Friendship Day Celebrations | 3 | 4 Friendship Day |
| 5 Social Week Begins Elocution Competition for Grades I - VIII | 6 | 7 Wondrous Wednesday | 8 | 9 Social Week Ends Grades I - VIII Mock Parliament | 10 Stimulus 2.1 for Grades VI - VIII | 11 |
| 12 EY Recitation Competition | 13 | 14 Rakshabandhan Celebrations | 15 Independence Day | 16 Varalaxmi Vratham Holiday | 17 Holiday | 18 |
| 19 Rakshabandhan Holiday | 20 PT2 | 21 Wondrous Wednesday PT2 | 22 PT2 | 23 Dahi Handi breaking Janmashtami Celebrations PT2 | 24 PT2 | 25 |
| 26 Janmashtami Holiday | 27 Blue Week (EY) | 28 | 29 National Sports Day Athletics Competition Grade IV - VIII | 30 | 31 | |



MONTH INCLUSIONS

- Spell Bee
- Social Week

SPORTS EVENT


- Box Race (Nur - PP2)
- Obstacle Race (Grade I - III)
- Athletics Competition (Grade IV - VIII)

SEPTEMBER

| MON | TUE | WED | THU | FRI | SAT | SUN |
|--|---|--------------------------------|---|--|--|---------------------------------|
| | | | | | | 1 |
| 2 Appreciation Week Begins | 3 | 4 World Taekwondo Day | 5 Teacher's Day Celebrations Appreciation Week ends | 6 Ganesh Chaturthi Celebrations Clay Ganesha making | 7  Ganesh Chaturthi Holiday | 8 International Literacy Day |
| 9 | 10 | 11 EY Wondrous Wednesday | 12 | 13 Hindi Diwas Intl. Dot Day Celebrations | 14 | 15 International Dot Day |
| 16 Milad-un-Nabi Holiday | 17 Ganesh Nimarjan Holiday | 18 | 19 | 20 | 21 Grand Parents Day (EY - Grade V) | 22 |
| 23 Term-1 Assessment begins(Grade IV - VIII) Green Week (EY) | 24 | 25 | 26 | 27 International Day of Peace Term-1 Assessment ends(Grade IV - VIII) | 28 | 29 |
| 30 |  MONTH INCLUSIONS <ul style="list-style-type: none"> • Spell Bee • Appreciation Week | | | SPORTS EVENT <ul style="list-style-type: none"> • Squeeze & Fill (Early Years) • Hurdles (Grade I - III) • Throw Ball (Grade IV - VIII) • Taekwondo Day (Grade IV - VIII) | | |

OCTOBER

| MON | TUE | WED | THU | FRI | SAT | SUN |
|-------------------------------------|---|--|--|---------------------------|---------------------|------------------------------|
| | 1 Bathukamma Celebrations | 2  Gandhi Jayanthi Holiday | 3 Dussehra vacation begins | 4 | 5 | 6 |
| 7 | 8 | 9 | 10 | 11 Durgashtami | 12 Vijaya Dasami | 13 Dussehra vacation ends |
| 14 School reopens (Tentative) | 15 | 16 Wondrous Wednesday | 17 | 18 | 19 | 20 |
| 21 Orange Week (Early Years) | 22 Story Telling Prelims for EY - Grade II Express & Exhibit for Grades III - V | 23 Story Telling Finals | 24 One-act Play Prelims for Grades VI - VIII | 25 One-act Play Finals | 26 | 27 |
| 28 | 29 | 30  Halloween & Diwali Celebrations | 31  Halloween Diwali Holiday | | | |

-  **MONTH INCLUSIONS**
- Field Trip
 - Resource Person

- SPORTS EVENT**
- Indoor Games

NOVEMBER

| MON | TUE | WED | THU | FRI | SAT | SUN |
|--|-----------|--|---|--|---|-----|
| | | | | 1  Diwali Holiday | 2 | 3 |
| 4 | 5 | 6 Wondrous Wednesday Fireless Cooking (EY) | 7 | 8 | 9  Global Cultural Fest | 10 |
| 11 | 12 | 13 | 14  Children's Day & Gurunanak Jayanthi Celebrations | 15  Gurunanak Jayanthi Holiday | 16 | 17 |
| 18 Science Week begins | 19 | 20 | 21 | 22 Science Week ends | 23 | 24 |
| 25 Yellow Week (Early Years) PT3 | 26 PT3 | 27 PT3 | 28 PT3 | 29 PT3 | 30 | |



MONTH INCLUSIONS

- Spell Bee
- Science Week

SPORTS EVENT

- Prop Race (Early Years)
- Soccer (Grade I - VII)
- Volley Ball (Grade VI - VII)

DECEMBER

| MON | TUE | WED | THU | FRI | SAT | SUN |
|--|--|---|---|---|------------------|---|
| | | | | | | 1 |
| 2 | 3 | 4 | 5 | 6 | 7 Stimuls 2.2 | 8 |
| 9 | 10 | 11 EY Wondrous Wednesday | 12 | 13 Carol Singing Competition (Grade I - VIII) | 14 | 15 |
| 16 White Day (Early Years) Maths Week begins | 17 Term-2 Assessment begins for Grade IV - V | 18 Term-2 Assessment for Grade IV - V | 19 Term-2 Assessment for Grade IV - V | 20 Christmas Celebrations Maths Week ends | 21 | 22  Winter Carnival Ramanujan Birthday |
| 23 | 24 Christmas Holiday | 25  Christmas Holiday | 26 | 27 | 28 | 29 |
| 30 | 31 New year Celebrations | MONTH INCLUSIONS <ul style="list-style-type: none"> • Spell Bee • Maths Week | | SPORTS EVENT <ul style="list-style-type: none"> • Recreational Sports (Nur - PP2) • Lawn Tennis (Grade I - VIII) • Cricket (Grade V - VIII) | | |

JANUARY

| MON | TUE | WED | THU | FRI | SAT | SUN |
|--|---|---|--|---|---|--|
| | | 1  New year Holiday | 2 | 3 | 4  Annual Concert | 5 |
| 6 | 7 | 8 | 9 | 10  Kite Making Pongal Celebrations | 11 Pongal vacation begins | 12 |
| 13 | 14 | 15 | 16 | 17 School reopens after vacation | 18 | 19 |
| 20 Poster making Competition (Grade I - V) | 21 Debate Prelims (Grade VI - VIII) | 22 Wondrous Wednesday | 23 Netaji Subash Chandra Bose Birthday | 24 Debate Finals (Grade VI - VIII) | 25 | 26  Republic Day |
| 27 PT4 | 28 PT4 | 29 PT4 Class Photograph | 30 PT4 | 31 PT4 | | |



MONTH INCLUSIONS

- Spell Bee Final
- Poster making Competition
- Debate Competition

SPORTS EVENT

- Indoor Games

FEBRUARY

| MON | TUE | WED | THU | FRI | SAT | SUN |
|-----|-----------------------|---|-----|-----|---|-----|
| | | | | | 1 | 2 |
| 3 | 4 World Cancer Day | 5 Wondrous Wednesday (EY) | 6 | 7 | 8 | 9 |
| 10 | 11 | 12 | 13 | 14 | 15 PT4 Results for Grade VI - VIII Art Gallery | 16 |
| 17 | 18 | 19 | 20 | 21 | 22 Robo Fest | 23 |
| 24 | 25 | 26  Mahashivratri Holiday | 27 | 28 | | |



MONTH INCLUSIONS

- Dental Check
- Field Trip
- Resource Person

SPORTS EVENT


- Basket Ball (Grade I - VIII)
- Kings Ring (Grade V - VIII)

MARCH

| MON | TUE | WED | THU | FRI | SAT | SUN |
|---|--|------------------------------|---------------------------|--|--|---------------------------------|
| | | | | | 1 | 2 |
| 3 Final Exams begins for Grade VI - VIII | 4 | 5 Wondrous Wednesday (EY) | 6 | 7 | 8 | 9 |
| 10 | 11 | 12 | 13 | 14 Holi Holiday | 15 SLC (EY - Grade IV) | 16 |
| 17 | 18 | 19 | 20 | 21 Final Exams ends for Grade VI - VIII | 22 Graduation Day RC (EY - Grade V) | 23 |
| 24 | 25 | 26 | 27 RC Kit Distribution | 28 Kit Distribution | 29 Gudipadwa (Tentative) | 30 Ugadi Holiday (Tentative) |
| 31 |  MONTH INCLUSIONS • School Supplies (Kit Distribution) | | | SPORTS EVENT | | |

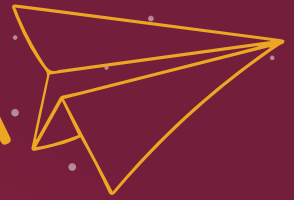
APRIL

| MON | TUE | WED | THU | FRI | SAT | SUN |
|---------------------------------|--------------------------|---|--|---|-----|----------------------|
| | 1 Eid Al Fitr Holiday | 2 New Academic Year begins for Grades I - IX | 3 New Academic Year begins for PP1, PP2 | 4 | 5 | 6 Sri Rama Navami |
| 7 | 8 | 9 Wondrous Wednesday (EY) | 10 | 11 | 12 | 13 |
| 14 Ambedkar Jayanthi Holiday | 15 | 16 | 17 | 18 World Heritage Day Last working day for EY | 19 | 20 |
| 21 | 22 | 23 | 24 | 25 Last Working Day for Grades I - IX | 26 | 27 |
| 28 | 29 | 30 | | | | |

 **MONTH INCLUSIONS**

SPORTS EVENT

Let us help your **CHILD**
Chase their **DREAM**



Shantiniketan
School

CULTURAL ROOTS. GLOBAL GROWTH.

Survey no.704, Bowrampet, Near Bachupally, Hyderabad - 500043

+91 8079808055 / 56

snisbowrampet@gmail.com

www.shantiniketanbowrampet.com